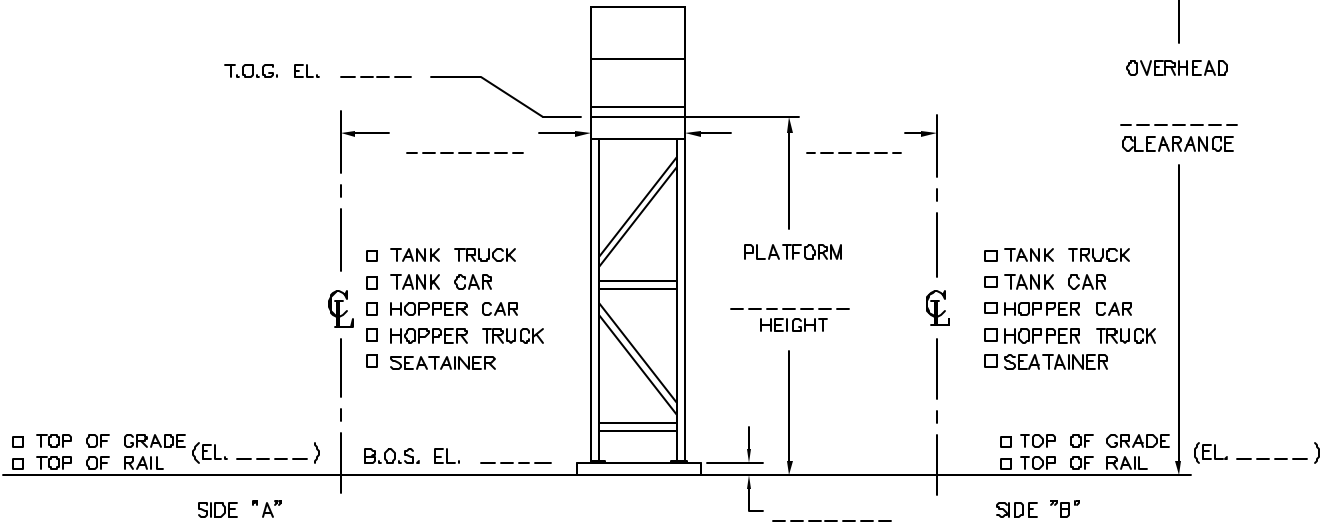
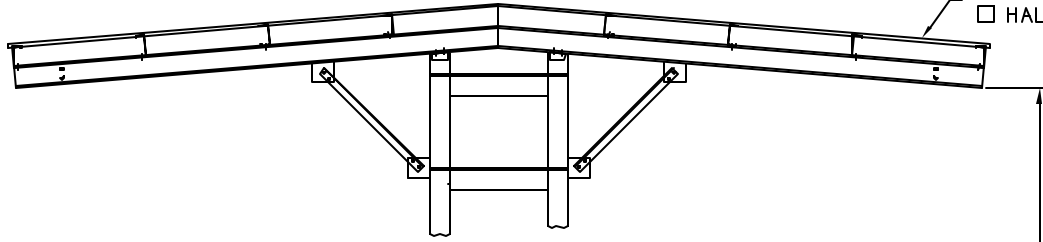


▲ NOTE ANY OBSTRUCTIONS THAT MAY INTERFERE WITH ACCESS EQUIPMENT OPERATION

- FULL CANOPY (DOUBLE SIDED)
- HALF CANOPY (SINGLE SIDED)



ELEVATION VIEW

* ALL TRUCK CENTERLINES *
SHOULD ALLOW A SPOTTING
VARIANCE OF ±6"

FILL OUT DIMENSIONAL INFORMATION
ON ALL VEHICLES
SERVICED ON VEHICLE DATA SHEET

FOR EXISTING LOADING RACK

IDENTIFY (X) WHICH MEMBER / GRATING CONFIGURATION MATCHES
YOUR PLATFORM AND FILL IN CORRECT SIZES

<p>GRATING SIZE _____ MATERIAL FINISH _____ MEMBER SIZE (DEPTH & FLANGE WIDTH) _____</p> <p><input type="checkbox"/></p>	<p>GRATING SIZE _____ MATERIAL FINISH _____ MEMBER SIZE (DEPTH & FLANGE WIDTH) _____</p> <p><input type="checkbox"/></p>	<p>GRATING SIZE _____ MATERIAL FINISH _____ MEMBER SIZE (DEPTH & FLANGE WIDTH) _____</p> <p><input type="checkbox"/></p>
<p>GRATING SIZE _____ MATERIAL FINISH _____ MEMBER SIZE (DEPTH & FLANGE WIDTH) _____</p> <p><input type="checkbox"/></p>	<p>GRATING SIZE _____ MATERIAL FINISH _____ MEMBER SIZE (DEPTH & FLANGE WIDTH) _____</p> <p><input type="checkbox"/></p>	<p>GRATING SIZE _____ MATERIAL FINISH _____ MEMBER SIZE (DEPTH & FLANGE WIDTH) _____</p> <p><input type="checkbox"/></p>

FOR NEW LOADING RACK

QUESTIONS BELOW ARE FOR A STRAIGHT, UNIFORM WIDTH PLATFORM.
FOR OTHER CONDITIONS, PLEASE SUBMIT SKETCH.

- A. PLATFORM LENGTH = _____
- B. PLATFORM HEIGHT
 10'-6" 12'-0" 16'-6" OTHER _____
- C. PLATFORM WIDTH
 3'-6" 3'-0" 4'-0" OTHER _____
- D. STAIRS: STD. ALCO BOCA
 1 END BOTH ENDS
- NUMBER OF STAIRS AT OTHER LOCATIONS (PERPENDICULAR TO MAIN AXIS OF PLATFORM) : _____

NOTE: STAIRS AT 45° ANGLE UNLESS NOTED OTHERWISE.

- E. NUMBER OF CAGE LADDERS: _____ (NOTE LOCATION)
- F. PLATFORM SUPPORTS
 PEDESTAL 2 LEG TOWER

NOTE: IF CANOPY IS TO BE SUPPLIED, SOME OR ALL OF THE PLATFORM SUPPORTS MAY BE ELIMINATED.

- G. MATERIAL / FINISH
- ALUMINUM
 MILL FINISH FLAME COATED
 YELLOW GRAY BLACK OTHER _____
- STEEL
 MILL FINISH GALVANIZED PRIMED
 FLAME COATED
 YELLOW GRAY BLACK OTHER _____
 PAINTED (PROVIDE PAINT SPEC. & SURFACE PREP.)

- H. WALK SURFACE
 OPEN SERRATED METAL PLANK GRATING (STANDARD)
 BAR GRATING
 PLAIN SERRATED
 FIBERGLASS WALK SURFACE
- I. CANOPY
 FULL HALF
- 1) MATERIAL FINISH - STRUCTURAL MEMBERS
 ALUMINUM
 MILL FINISH FLAME COATED
 YELLOW GRAY BLACK OTHER _____
- STEEL
 MILL FINISH GALVANIZED PRIMED
 FLAME COATED
 YELLOW GRAY BLACK OTHER _____
 PAINTED (PROVIDE PAINT SPEC. & SURFACE PREP.)
- 2) MATERIAL - ROOFING
 GALVALUME®
 OPTION: FRP
 (SPECIFY STYLE & COLOR)

ACCESS EQUIPMENT

A. GANGWAYS

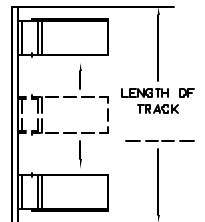
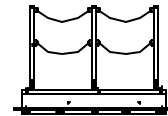
- 1) TYPE
 TCG-1000 TCG-2000 TCG-2500 DETERMINE
- 2) MATERIAL / FINISH
 ALUMINUM
 MILL FINISH FLAME COATED
 YELLOW GRAY
 BLACK OTHER _____
- STEEL
 MILL FINISH GALVANIZED PRIMED
 FLAME COATED
 YELLOW GRAY BLACK OTHER _____
 PAINTED (PROVIDE PAINT SPEC. & SURFACE PREP.)
- 3) WALK SURFACE
 STANDARD FRP GRATING
 SERRATED BAR GRATING OTHER _____
- 4) WIDTH (BASE TREAD)
 24" (STD.) 18 1/4" (NAR.)
 32" 44" OTHER _____
- 5) TYPE OF MOUNT
 STANDARD
 RETROFIT
 PIVOT
 STANDARD ELEVATING
 "HEMCO" RETROFIT
- MATERIAL / FINISH
 MILL STEEL PRIMED STEEL
 GALVANIZED STEEL

B. OPTIONS

- SAF-T CAGE
 PREFERRED SIZE
 HEIGHT
 12" 22" 33"
 DETERMINE _____
- TRACK MOUNT

A. MATERIAL

- PAINTED (PROVIDE PAINT SPEC. & SURFACE PREP.)
 PRIMED STEEL
 GALVANIZED STEEL
 MILL FINISH STEEL



B. TYPE OF HANDRAIL

- CHAIN OPENINGS
 SWING GATES
 TRACK MOUNTED

(UNLESS NOTED OTHERWISE, TRACK MOUNTED HANDRAIL WILL BE OF SAME MATERIAL AS TCG)

- MODIFIED STORED POSITION
 SEATAINER TREAD
 PNEUMATIC OPERATION (80 PSIG - STANDARD)
 (OTHER SYSTEM OPTIONAL - ADVISE PSIG _____)
 HYDRAULIC OPERATION MANUAL POWER *

7) MODIFICATIONS:

B. ENCLOSURES

- 1) TYPE
 - TCEN TCEN-2
 - TCEN-2 INDEPENDENT TCEN-3
- 2) LENGTH = _____
LENGTH OF EXISTING PLATFORM _____
- 3) MATERIAL / FINISH
 - ALUMINUM
 - MILL FINISH FLAME COATED
 - YELLOW GRAY
 - BLACK OTHER _____
 - STEEL
 - MILL FINISH GALVANIZED PRIMED
 - FLAME COATED
 - YELLOW GRAY BLACK OTHER _____
 - PAINTED (PROVIDE PAINT SPEC. & SURFACE PREP.)
- 4) IF ENCLOSURE IS LONGER THAN PLATFORM (OR OVERHANGS THE END), INDICATE LENGTH OF OVERHANG AT EACH END.
- 5) OPTIONS
 - SELF-SUPPORTING
 - PNEUMATIC OPERATION (80 PSIG - STD.)
(OTHER SYSTEM OPTIONAL - ADVISE PSIG _____)
 - INBOARD & OUTBOARD
 - INBOARD ONLY
 - OUTBOARD ONLY
 - HYDRAULIC OPERATION MANUAL POWER *
 - INBOARD & OUTBOARD
 - INBOARD ONLY
 - OUTBOARD ONLY
 - WINCH OPERATION
 - INBOARD & OUTBOARD
 - INBOARD ONLY
 - OUTBOARD ONLY
 - MODIFIED STORED POSITION
 - WALKABLE PANELS
- 6) MODIFICATIONS: _____

C. HOPPER CAR / TRUCK HANDRAIL SYSTEM

- 1) LENGTH = _____
- 2) FIXED ELEVATING
 PIPE SQUARE TUBE
- 3) MATERIAL / FINISH
 - a. HANDRAIL
 - ALUMINUM
 - MILL FINISH FLAME COATED
 - YELLOW GRAY
 - BLACK OTHER _____
 - STEEL
 - MILL FINISH GALVANIZED PRIMED
 - FLAME COATED
 - YELLOW GRAY BLACK OTHER _____
 - PAINTED (PROVIDE PAINT SPEC. & SURFACE PREP.)
 - b. SUPPORTS
 - MILL FINISH GALVANIZED PRIMED
 - FLAME COATED
 - YELLOW GRAY BLACK OTHER _____
 - PAINTED (PROVIDE PAINT SPEC. & SURFACE PREP.)
- 4) OPTIONAL ACCESS PLATFORM WITH
TCG-2000-7
- 5) POWER PACK OPTION *

D. MULTI-MODALS

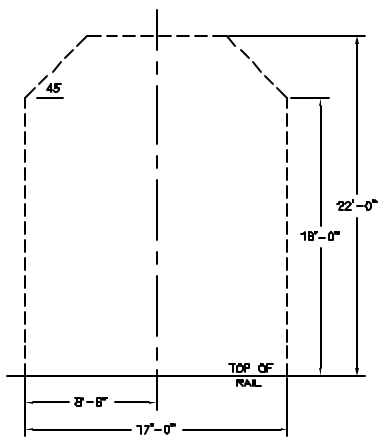
(80 PSIG - STANDARD)
(OTHER SYSTEM OPTIONAL - ADVISE PSIG _____)

- 1) LENGTH = _____
- 2) MATERIAL FINISH
 - ALUMINUM (ONLY THE TCG BODY AND PLATFORM ARE ALUMINUM. CARRIAGE & SUPPORT STRUCTURE MUST BE STEEL.)
 - MILL FINISH FLAME COATED
 - YELLOW GRAY
 - BLACK OTHER _____
 - STEEL
 - MILL FINISH GALVANIZED PRIMED
 - FLAME COATED
 - YELLOW GRAY BLACK OTHER _____
 - PAINTED (PROVIDE PAINT SPEC. & SURFACE PREP.)
- 3) OPTIONS
 - SPRING OPERATED GANGWAY IN LIEU OF PNEUMATIC OPERATED
 - WITHOUT SWING GATES
 - TRACK MOUNTED GATES IN LIEU OF FIXED SWING GATES
 - WITHOUT INTERNAL COUNTERWEIGHT SYSTEM
 - FLIP UP PANELS
 - ALUMINUM (STANDARD)-3'-0" WIDE
 - GALVANIZED STEEL (1'-6" WIDE)
 - FIBERGLASS (1'-8" WIDE)
- 4) POWER PACK *

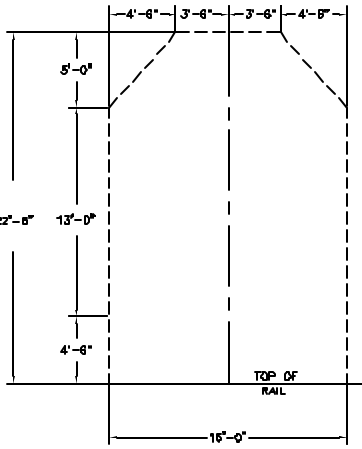
* POWER PACK OPTION *

- SINGLE STATION
- DOUBLE STATION
- NON-EXPLOSION PROOF NEMA-4 (460/3/60)
- EXPLOSION PROOF NEMA 7 & 9 (460/3/60)
(INDICATE ELECTRICAL CLASS / DIVISION)
- AIR DRIVEN HYDRAULIC PUMP - EXPLOSION PROOF
- STAINLESS STEEL RESERVOIR
- CYLINDER - ROD BOOT COVERS (SEE BELOW)
 - SPECIAL MATERIAL _____
 - TCG
 - MULTI-MODAL/ELEVATING HANDRAIL

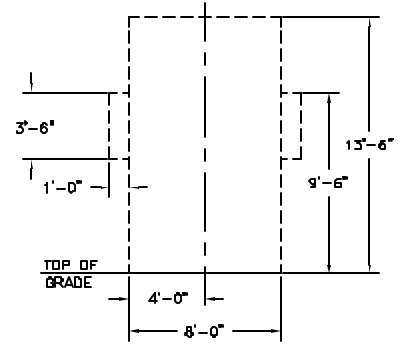
THESE ARE TYPICAL REPRESENTATIONS, PLEASE NOTE ACTUAL CONFIGURATIONS IF DIFFERENT.



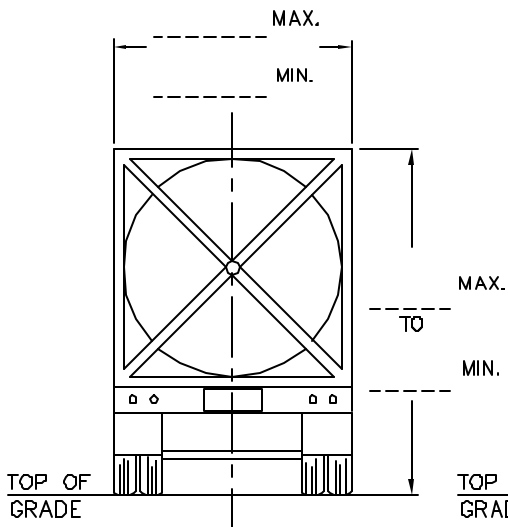
STANDARD RAILROAD ENVELOPE



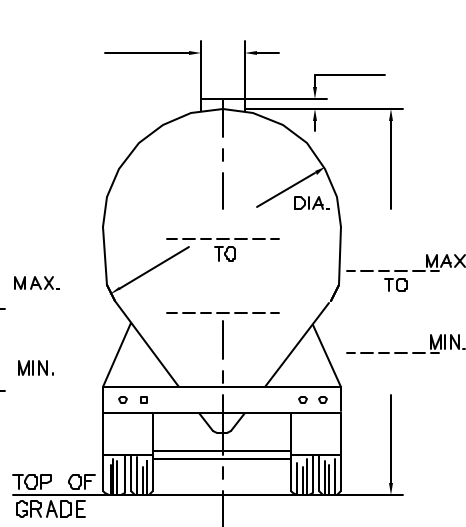
CANADIAN RAILROAD ENVELOPE



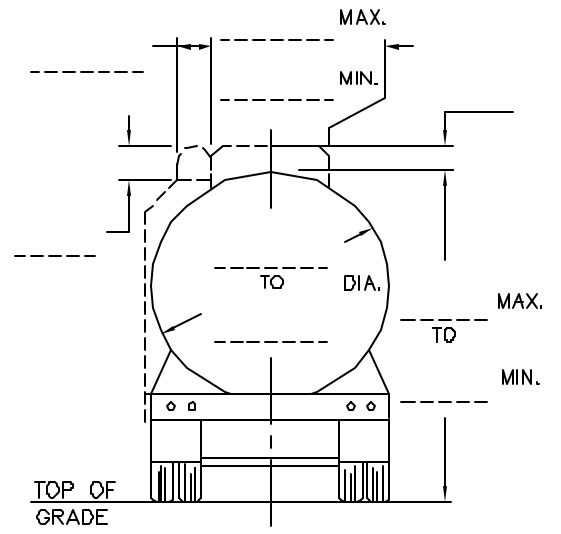
STANDARD TRUCK ENVELOPE



SEATAINER

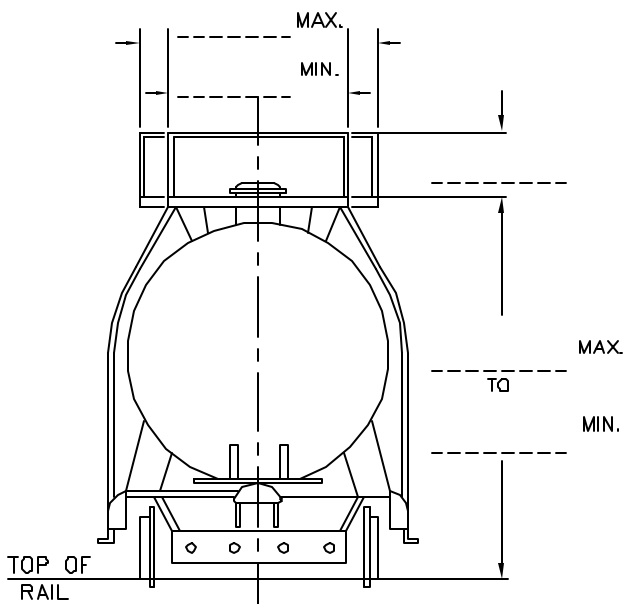


HOPPER TRUCK

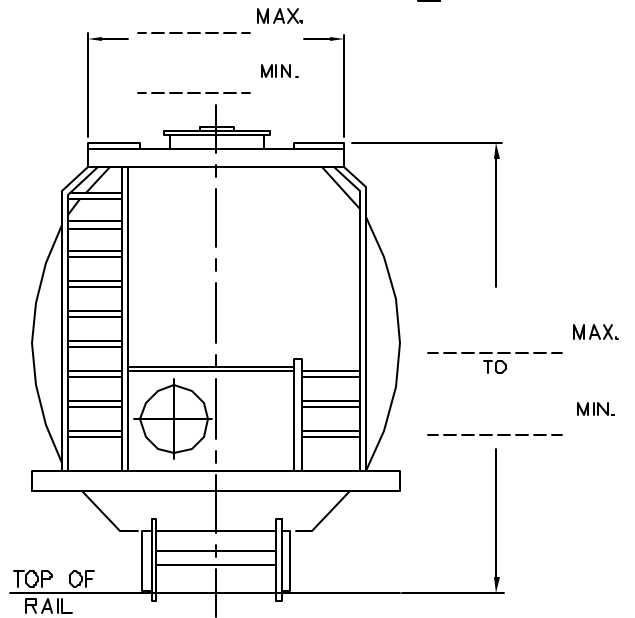


TANK TRUCK

☐ OFFSET HATCHES



TANK CAR



HOPPER CAR

TRACK COLLECTOR PAN

- 20'-0" X 10'-0" 20'-0" X 11'-0" 20'-0" X 12'-0"
- 40'-0" X 10'-0" 40'-0" X 11'-0" 40'-0" X 12'-0"
- SURE DRAIN FLAT
- CENTER PAN ONLY 3 PAN SYSTEM

OTHER LENGTH/WIDTH _____

MATERIAL / FINISH

- ALUMINUM 304 STAINLESS STEEL
- MILL FINISH STEEL 316 STAINLESS STEEL
- GALVANIZED STEEL COATING - ATTACH SPECIFICATIONS

CROSS DRAIN OUTLET

- SIDE
- BOTTOM
- STD. 4" COUPLING
- STD. 4" FLANGE
- STD. 6" FLANGE

OVERALL LENGTH OF SYSTEM _____

OPTIONS:

- GRATING--WALK-ON _____
- GRATING--DRIVE-ON _____
- SLIP RESISTANT COATING
- GROUNDING LUGS
- INSULATED FLASHING

GASKET MATERIAL

- NEOPRENE (STD.)
- TEFLON
- VITON
- OTHER _____

(NOTE: IF TRACK IS NOT STRAIGHT OR INCLUDES SWITCHES OR FROGS, ATTACH TRACK LAYOUT.)

TRUCK COLLECTOR PAN

- STD. 20'-0" X 10'-0"
- OTHER _____

SUPPORT STRUCTURE MATERIAL / FINISH

- MILL FINISH STEEL GALVANIZED STEEL

PAN MATERIAL / FINISH

- MILL FINISH STEEL 304 STAINLESS STEEL
- GALVANIZED STEEL 316 STAINLESS STEEL

CROSS DRAIN OUTLET

- SIDE
- BOTTOM
- STD. 4" COUPLING
- STD. 4" FLANGE
- STD. 6" FLANGE

OPTIONS:

- RAMPS
- STD. 14'-0" X 10'-0"
- OTHER _____

MATERIAL / FINISH

- GALVANIZED STEEL
- PRIME STEEL
- MILL STEEL

- BUMPERS
- GRATING

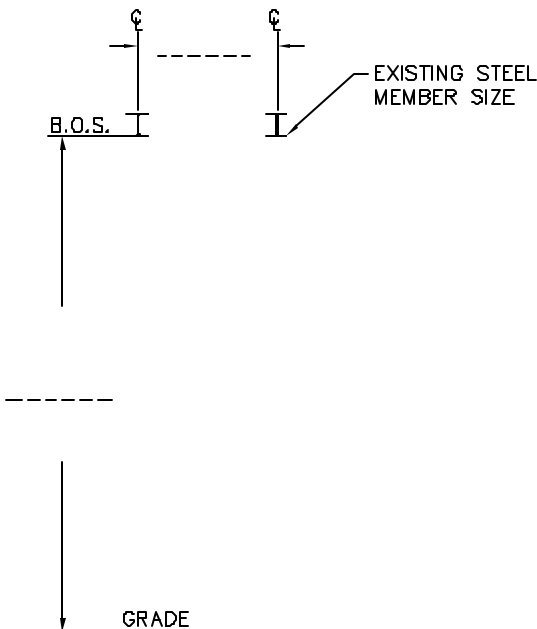
MATERIAL / FINISH

- GALVANIZED STEEL
- MILL FINISH STEEL

GASKET MATERIAL

- NEOPRENE(STD.)
- TEFLON
- VITON
- OTHER _____

HORIZONTAL LIFELINE SYSTEMS



SAYFGLIDA®

LENGTH OF SYSTEM _____

NUMBER OF USERS _____

TYPE OF CONSTRUCTION

- GALVANIZED STEEL
- PRIMED STEEL
- PAINTED STEEL

TYPE OF SUPPORTS

- "L" SHAPE
- "H" SHAPE
- "T" SHAPE

CENTER LINE OF SUPPORT TO
CENTER LINE OF VEHICLE

TROLLEY BEAM SYSTEM®

LENGTH OF SYSTEM _____

NUMBER OF USERS _____

TYPE OF CONSTRUCTION

- GALVANIZED STEEL
- PRIMED STEEL
- PAINTED STEEL

TYPE OF SUPPORTS

- "L" SHAPE
- "H" SHAPE
- "T" SHAPE

SECURASPAN®

LENGTH OF SYSTEM _____

NUMBER OF USERS _____

TYPE OF CONSTRUCTION

- GALVANIZED STEEL
- PRIMED STEEL
- PAINTED STEEL

TYPE OF SUPPORTS

- "L" SHAPE
- "H" SHAPE
- "T" SHAPE

**SEE DRAWING FOR
RETROFIT APPLICATION

LOADING ARMS

* NOTE RISER LOCATION, QUANTITY, ETC. ON VEHICLE & PLATFORM PLAN VIEWS *

- LOADING ARM SUPPORT
- LOADING ARM INVOLVEMENT

QUANTITY OF ARMS _____

RISER ORIENTATION

- UPFEED DOWNFEED
- HORIZONTAL

MATERIAL TO BE TRANSFERRED

PRODUCT _____
TEMPERATURE ____°F VISCOSITY ____SSU
CONCENTRATION (IF APPLICABLE) _____
METALS & SEALS NOW USED TO HANDLE
PRODUCT _____

TYPE OF VEHICLE

- TANK TRUCK RAILCAR
- OTHER TYPE OF LOADING (DRUMS, ETC.) _____

SIZES AND CAPACITIES

PIPE SIZE _____ VAPOR PIPE SIZE _____
MAX. PSIG _____ DISCHARGE RATE _____GPM
WORKING PSIG _____

FEATURES

- WILL ARM NEED TO OFFER FLEXIBILITY FOR VEHICLE MIS-SPOTTING?
 YES NO SPOTTING ALLOWANCE ± _____FT
- WILL ARM SERVE BOTH SIDES OF PLATFORM? YES NO
- WILL THE PRODUCT BE: SPLASH-LOADED SUB-SURFACE TIGHT-FILL
- IF TIGHT FILL, SPECIFY SIZE & TYPE OF TIGHT-FILL CONNECTION.

- IS A SHUT-OFF VALVE REQUIRED IN THE LOADING ARM? YES NO
- IF VALVED LOADER, SPECIFY SIZE, PREFERRED TYPE, AND LOCATION OF VALVE.

- IF VALVED LOADER, WILL ARM RETAIN PRODUCT? YES NO

VAPOR RECOVERY

- YES NO

VAPOR RECOVERY ATTACHMENT

- INFLATABLE HATCH SEAL
- COVER PLATE
- TAPERED HATCH PLUG
- NONE (SPECIFY SIZE & TYPE OF CONNECTION ON END OF VAPOR LINE)

TYPE OF REQUIREMENT

- TOP LOADING
- TOP UNLOADING
- BOTTOM LOADING
- BOTTOM UNLOADING

PREFERRED METALS

- ALL PARTS CARBON STEEL
- CARBON STEEL & ALUMINUM
- ALL PARTS 316 STAINLESS STEEL
- 316 STAINLESS STEEL & ALUMINUM
- NON-FERROUS METALS

PREFERRED SEALS

- VITON
- BUNA-N
- FOOD GRADE NEOPRENE
- TEFLON
- NOT KNOWN
- OTHER _____

PREFERRED BALANCING METHOD

- SPRING
- RT HAND LT HAND
- COUNTERWEIGHTS
- OTHER _____

SPECIAL REQUIREMENTS FOR ARM

- STEAM JACKETING
- X-RAY
- ALL WELDED CONSTRUCTION
- HIGH LEVEL SHUT-OFF SENSOR
- OTHER _____

EQUIPMENT BY OTHERS

(SPECIFY WEIGHT & LOCATION)

- ELECTRICAL TRACING _____LBS/FT
- INSULATION _____LBS/FT
- HOSE _____
- VALVE _____
- OTHER _____

SPECIAL NOTES AND/OR SKETCHES

FOR RETROFIT EQUIPMENT, THE QUOTATION WILL BE FURNISHED BASED UPON THE RACK HAVING A CLEAN MOUNTING FACE WITH NO OBSTRUCTIONS TO EQUIPMENT OPERATION & BEING STRUCTURALLY SOUND. IF ANY OF THESE CONDITIONS CANNOT BE MET, PLEASE CONTACT CARBIS SALES, INC. TO HAVE A REPRESENTATIVE HELP YOU WITH YOUR PARTICULAR REQUIREMENTS.

INSTALLATION

PLANT CONTACT: _____

*PLANT SAFETY PROCEDURES MUST BE INCLUDED WITH ALL REQUEST.

PRE-BID MEETING: YES NO

PRE-CONSTRUCTION MEETING: YES NO

REQUIREMENTS:

- HOT PERMITS CONTRACTOR'S LICENSE DRUG TESTING RESPIRATORS
- UNION LABOR PERFORMANCE BOND FACIAL HAIR RESTRICTIONS

EXPLAIN: _____

SITE ACCESSIBILITY: CLEAR OBSTRUCTED

IF OBSTRUCTED, PLEASE EXPLAIN: _____

WILL MODIFICATIONS TO EXISTING STRUCTURE ENCOUNTER LEAD CONTAMINATION? YES NO

IF YES, PLEASE EXPLAIN EXTENT OF CONTAMINATION _____

NAME OF STATE AGENCY REGULATING LEAD ABATEMENT _____

PERMITTED WORK SCHEDULE: DAYS _____
HOURS _____

SAFETY ORIENTATION REQUIRED: YES NO

IF YES, HOW LONG? _____

LAYDOWN AREA ADJACENT TO WORKSITE YES NO

EXPLAIN: _____

INSURANCE REQUIREMENTS: _____

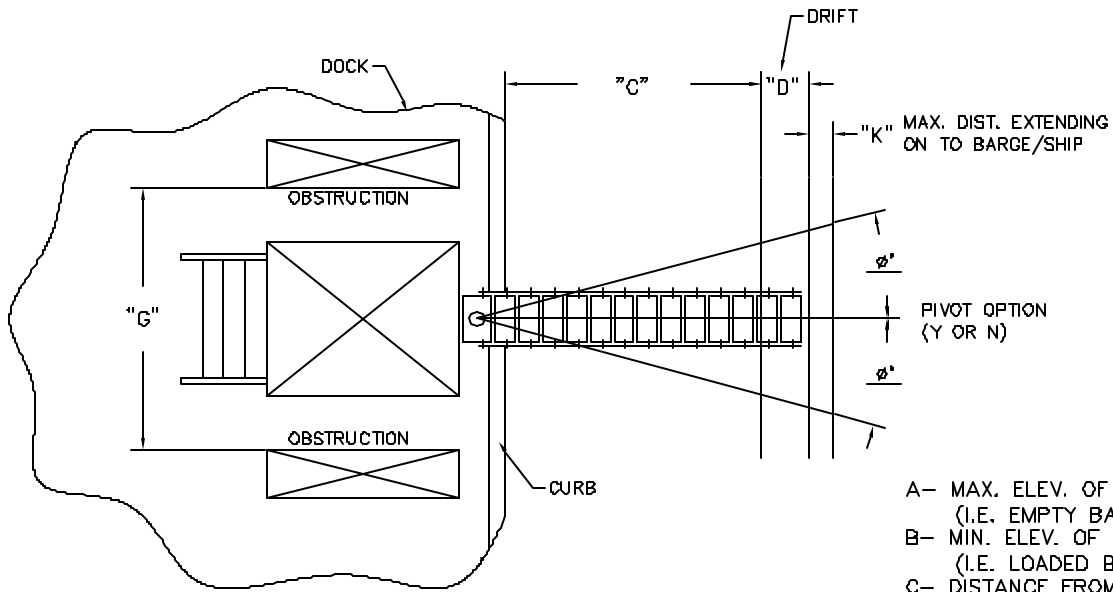
PLANT FACILITIES AVAILABLE TO CARBIS PERSONNEL:

- WATER WASHROOM / RESTROOM
- ELECTRICITY

ADDITIONAL SERVICES TO BE FURNISHED BY CARBIS:

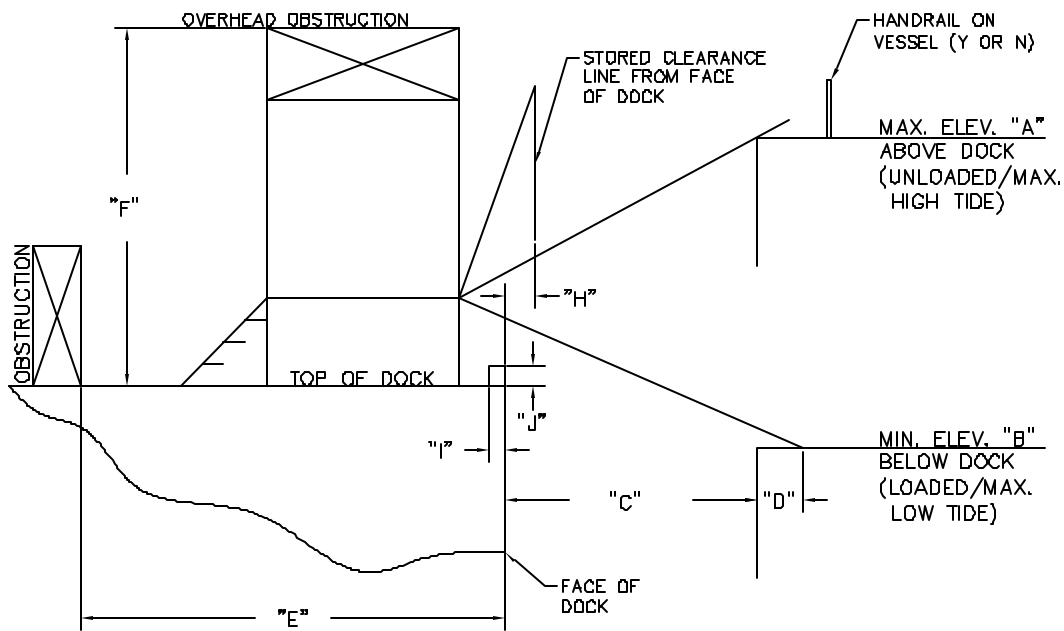
- OFFSITE DISPOSAL OF WASTE RELOCATION OF EXISTING CONDUIT
- UNLOADING OF TRUCKS RELOCATION OF EXISTING PIPING
- SITE PREPARATION / GRADING OTHER CONCRETE WORK
- FOUNDATIONS OTHER: _____
- DEMOLITION

BARGE ACCESS SYSTEM



PLAN VIEW

- A- MAX. ELEV. OF BARGE ABOVE DOCK. (I.E. EMPTY BARGE @ HIGH TIDE)
- B- MIN. ELEV. OF BARGE BELOW DOCK. (I.E. LOADED BARGE @ LOW TIDE)
- C- DISTANCE FROM FACE OF DOCK TO FACE OF BARGE.
- D- MAX. DISTANCE BARGE MAY DRIFT OUT WHILE BARGE IS DOCKED.
- E- MAX. DEPTH ALLOWED FOR STRUCTURE ON DOCK.
- F- HEIGHT OF OVERHEAD OBSTRUCTIONS (IF ANY).
- G- WIDTH ALLOWED FOR STRUCTURE ON DOCK.
- H- DISTANCE FROM FACE OF DOCK REQUIRED FOR GANGWAY TO BE STORED FOR PROPER CLEARANCES.
- I- WIDTH OF CURB (IF ANY)
- J- HEIGHT OF CURB (IF ANY)
- K- MAX. DISTANCE GANGWAY MAY EXTEND ON TO BARGE.
- φ- DEGREE REQUIRED FOR PIVOT OPTION ONLY.



SIDE ELEVATION

A-	_____
B-	_____
C-	_____
D-	_____
E-	_____
F-	_____
G-	_____
H-	_____
I-	_____
J-	_____
K-	_____
φ-	_____

PIPE RACK SCOPE

A. LOCATION – GEOGRAPHIC

B. CLEARANCE

C. SPAN

D. NUMBER OF PIPES

E. SIZE OF PIPES

{WILL EFFECT SPACING OF SUPPORTS}

F. SPECIFIC GRAVITY OF PRODUCT(S) IN PIPE

G. MAXIMUM SPACING ON SUPPORTS

H. SOIL CONDITIONS (ASSUMED 2000 PSF)

I. NUMBER OF LEVELS (SPACING BETWEEN)

J. BENT STYLE

TEE

U-SHAPE

BRIDGE

K. PREEXISTING PIPE RACK

EXTEND

MATCH DESIGN

RETROFIT EXISTING STRUCTURE

L. INDOOR/OUTDOOR APPLICATION

MILL

PRIMED

GALVANIZED

SPECIAL PAINT

CUSTOMER SPECIFICATIONS

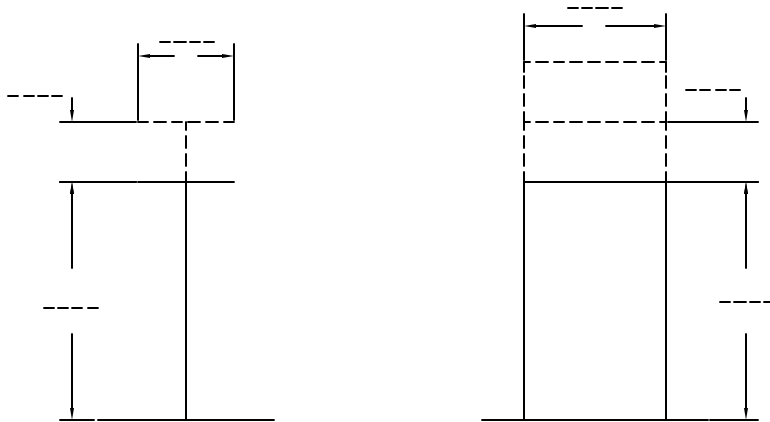
CARBIS SPECIFICATIONS

{MAY NOT BE SUITABLE FOR ALL ENVIRONMENTS}

M. FINAL PIPE ATTACHMENT

TO PIPE BY OTHERS

N. FUTURE PIPE ADDITIONS?



TEE STYLE

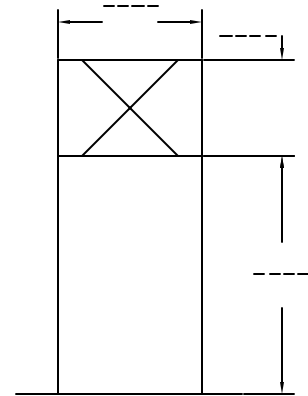
U-SHAPED

SUGGESTED PIPE SUPPORT SPACING

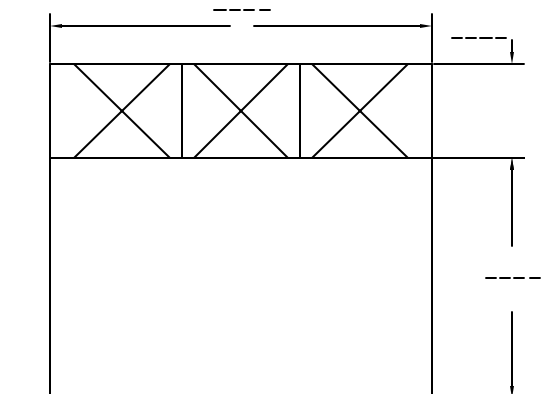
NOMINAL PIPE SIZE NPS	WATER SERVICE		STEAM, GAS, OR AIR SERVICE	
	ft	m	ft	m
1	7	2.1	9	2.7
2	10	3.0	13	4.0
3	12	3.7	15	4.6
4	14	4.3	17	5.2
6	17	5.2	21	6.4
8	19	5.8	24	7.3
12	23	7.0	30	9.1
18	27	8.2	35	10.7
20	30	9.1	39	11.9
24	32	9.8	42	12.8

GENERAL NOTES:

- (A) SUGGESTED MAXIMUM SPACING BETWEEN PIPE SUPPORTS FOR HORIZONTAL STRAIGHT RUNS OF STANDARD AND HEAVIER PIPE AT MAXIMUM OPERATING TEMPERATURE OF 750°F(400°C)
- (B) THE SPACING IS BASED ON A FIXED BEAM SUPPORT WITH A BENDING STRESS NOT EXCEEDING 2300 psi (15.86 MPa) AND INSULATED PIPE FILLED WITH WATER OR THE EQUIVALENT WEIGHT OF STEEL PIPE FOR STEAM, GAS, OR AIR SERVICE, AND THE PITCH OF THE LINE IS SUCH THAT A SAG OF 0.1 in. (2.5 mm) BETWEEN SUPPORTS IS PERMISSIBLE.



BRIDGE
(END VIEW)



BRIDGE